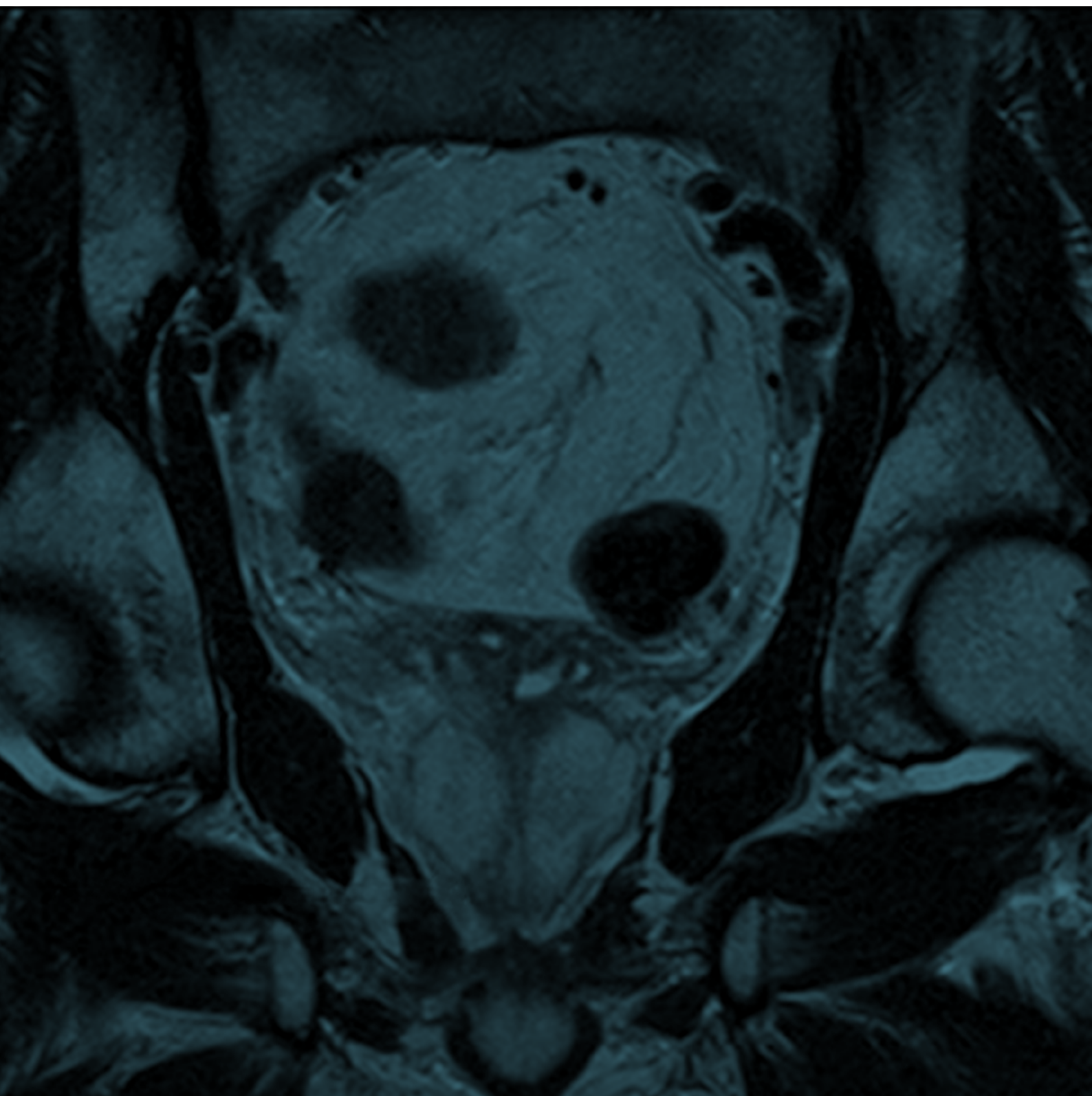


Annual Report 2022

Provider level results



National Prostate Cancer Audit

NPCA Annual Report 2022. Provider level results

London: The Royal College of Surgeons of England, 2023.



Royal College
of Surgeons
of England

Registered Charity No: 212808

The Royal College of Surgeons of England (RCS) is an independent professional body committed to enabling surgeons to achieve and maintain the highest standards of surgical practice and patient care. As part of this it supports Audit and the evaluation of clinical effectiveness for surgery.

The NPCA is based at the The Clinical Effectiveness Unit (CEU). The CEU is an academic collaboration between The Royal College of Surgeons of England and the London School of Hygiene and Tropical Medicine, and undertakes national clinical audits and research. Since its inception in 1998, the CEU has become a national centre of expertise in methods, organisation, and logistics of large-scale studies of the quality of surgical care. The CEU managed the publication of the NPCA Annual Report, 2022.

In partnership with:



THE BRITISH ASSOCIATION
OF UROLOGICAL SURGEONS

The British Association of Urological Surgeons (BAUS) was founded in 1945 and exists to promote the highest standards of practice in urology, for the benefit of patients, by fostering education, research and clinical excellence. BAUS is a registered charity and qualified medical practitioners practising in the field of urological surgery are eligible to apply for membership. It is intended that this website will be a resource for urologists, their patients, other members of the healthcare team and the wider public.



The British Uro-oncology Group (BUG) was formed in 2004 to meet the needs of clinical and medical oncologists specialising in the field of urology. As the only dedicated professional association for uro-oncologists, its overriding aim is to provide a networking and support forum for discussion and exchange of research and policy ideas.



NDRS
NATIONAL DISEASE REGISTRATION SERVICE

National Cancer Registration and Analysis Service (NCRAS), Public Health England collects patient-level data from all NHS acute providers and from a range of national data feeds. Data sources are collated using a single data processing system ('Encore') and the management structure is delivered through eight regional offices across England.

The NCRAS is the data collection partner for the NPCA.

Commissioned by:



HQIP

Healthcare Quality
Improvement Partnership

The Healthcare Quality Improvement Partnership (HQIP) is led by a consortium of the Academy of Medical Royal Colleges, the Royal College of Nursing, and National Voices. Its aim is to promote quality improvement in patient outcomes, and in particular, to increase the impact that clinical audit, outcome review programmes and registries have on healthcare quality in England and Wales. HQIP holds the contract to commission, manage, and develop the National Clinical Audit and Patient Outcomes Programme (NCAPOP), comprising around 40 projects covering care provided to people with a wide range of medical, surgical and mental health conditions. The programme is funded by NHS England, the Welsh Government and, with some individual projects, other devolved administrations and crown dependencies www.hqip.org.uk/national-programmes

All rights reserved. Applications for the copyright owner's written permission to reproduce significant parts of this publication (including photocopying or storing it in any medium by electronic means and whether or not transiently or incidentally to some other use of this publication) should be addressed to the publisher. Brief extracts from this publication may be reproduced without the written permission of the copyright owner, provided that the source is fully acknowledged.

Published January 2023 by the National Prostate Cancer Audit

The Royal College of Surgeons of England
35-43 Lincoln's Inn Fields
London
WC2A 3PE

T 020 7869 6601
E npc@rcseng.ac.uk
www.npc.org.uk

Designed @ www.superbirdcreative.co.uk

Contents

Appendix 1: Provider level (specialist MDT) data for the performance indicator 1	4
Performance indicator 1: Proportion of men diagnosed with metastatic disease at diagnosis.	
Appendix 2: Provider level (surgical centre) data for the performance indicator 2	5
Performance indicator 2: Proportion of patients who had an emergency readmission within 90 days of radical prostate cancer surgery.	
Appendix 3: Provider level (surgical centre) data for the performance indicator 3	6
Performance indicator 3: Proportion of patients experiencing at least one genitourinary (GU) complication requiring a procedural/surgical intervention within 2 years of radical prostatectomy (presented at the level of the surgical centre).	
Appendix 4: Provider level (radiotherapy centre) data for the performance indicator 4	7
Performance indicator 4: Proportion of patients receiving a procedure of the large bowel and a diagnosis indicating radiation toxicity (gastrointestinal (GI) complication) up to 2 years following radical prostate radiotherapy (presented at the level of the radiotherapy centre).	
Appendix 5: Provider level (specialist MDT) data for the performance indicators 5 and 6 (Wales only)	8
Performance indicator 5: Proportion of men with low-risk localised prostate cancer undergoing radical prostate cancer therapy.	
Performance indicator 6: Proportion of men with locally advanced disease receiving radical prostate cancer therapy.	

Appendix 1: Provider level (specialist MDT) data for the performance indicator 1

Performance indicator 1: Proportion of men diagnosed with metastatic disease at diagnosis.

Specialist MDT	No. of men with disease status determined	No. of men diagnosed with metastatic disease	
		N	%
Overall	23477	3962	16.9
Aneurin Bevan UHB	178	54	30.3
Barking, Havering and Redbridge University Hospitals NHS Trust	232	25	10.8
Barts Health NHS Trust	294	56	19.0
Betsi Cadwaladr UHB	451	60	13.3
Bradford Teaching Hospitals NHS Foundation Trust	532	103	19.4
Brighton and Sussex University Hospitals NHS Trust	227	17	7.5
Cambridge University Hospitals NHS Foundation Trust	841	121	14.4
Cardiff and Vale UHB	387	69	17.8
East and North Hertfordshire NHS Trust	490	87	17.8
East Kent Hospitals University NHS Foundation Trust	313	40	12.8
Gloucestershire Hospitals NHS Foundation Trust	374	71	19.0
Guy's and St Thomas' NHS Foundation Trust	453	50	11.0
Hull University Teaching Hospitals NHS Trust	682	125	18.3
Imperial College Healthcare NHS Trust	559	95	17.0
Lancashire Teaching Hospitals NHS Foundation Trust	784	164	20.9
Leeds Teaching Hospitals NHS Trust	292	60	20.5
Liverpool University Hospitals NHS Foundation Trust	526	77	14.6
Manchester University NHS Foundation Trust	160	31	19.4
Medway NHS Foundation Trust	394	70	17.8
Mid and South Essex NHS Foundation Trust	302	41	13.6
Mid Yorkshire Hospitals NHS Trust	381	55	14.4
Norfolk and Norwich University Hospitals NHS Foundation Trust	382	86	22.5
North Bristol NHS Trust	506	87	17.2
Northampton General Hospital NHS Trust	227	27	11.9
Nottingham University Hospitals NHS Trust	329	32	9.7
Oxford University Hospitals NHS Foundation Trust	479	81	16.9
Plymouth Hospitals NHS Trust	594	140	23.6
Portsmouth Hospitals NHS Trust	319	45	14.1
Royal Berkshire NHS Foundation Trust	231	17	7.4
Royal Devon and Exeter NHS Foundation Trust	665	101	15.2
Royal Surrey County Hospital NHS Foundation Trust	1364	201	14.7
Salford Royal NHS Foundation Trust	744	158	21.2
Sheffield Teaching Hospitals NHS Foundation Trust	802	135	16.8
South Tees Hospitals NHS Foundation Trust	215	63	29.3
South Tyneside and Sunderland NHS Foundation Trust	395	89	22.5
Southend University Hospital NHS Foundation Trust	80	5	6.3
Stockport NHS Foundation Trust	414	80	19.3
Swansea Bay UHB	607	116	19.1
The Newcastle upon Tyne Hospitals NHS Foundation Trust	529	106	20.0
The Princess Alexandra Hospital NHS Trust	166	25	15.1
The Royal Bournemouth and Christchurch Hospitals NHS Foundation Trust	623	100	16.1
The Royal Marsden NHS Foundation Trust	659	118	17.9
University College London Hospitals NHS Foundation Trust	438	21	4.8
University Hospital Southampton NHS Foundation Trust	416	88	21.2
University Hospitals Birmingham NHS Foundation Trust	325	52	16.0
University Hospitals Coventry and Warwickshire NHS Trust	724	116	16.0
University Hospitals of Derby and Burton NHS Foundation Trust	274	68	24.8
University Hospitals of Leicester NHS Trust	636	88	13.8
University Hospitals of North Midlands NHS Trust	980	135	13.8
Wirral University Teaching Hospital NHS Foundation Trust	502	111	22.1

Appendix 2: Provider level (surgical centre) data for the performance indicator 2

Performance indicator 2: Proportion of patients who had an emergency readmission within 90 days of radical prostate cancer surgery.

RP Trust	No. of men who received RP	No. of men who had an emergency readmission within 90 days of RP	Adjusted rate (%)
Overall	5118	634	12.4
Aneurin Bevan ULHB	21	4	24.2
Betsi Cadwaladr ULHB	30	2	8.6
Bradford Teaching Hospitals NHS Foundation Trust	100	23	22.1
Buckinghamshire Healthcare NHS Trust	31	2	6.9
Cambridge University Hospitals NHS Foundation Trust	111	11	9.7
Cardiff and Vale ULHB	76	4	6.6
East and North Hertfordshire NHS Trust	137	10	7.9
East Kent Hospitals University NHS Foundation Trust	85	23	24.5
East Lancashire Hospitals NHS Trust	60	9	14.2
East Suffolk and North Essex NHS Foundation Trust	14	6	48.7
East Sussex Healthcare NHS Trust	119	19	16.3
Gloucestershire Hospitals NHS Foundation Trust	119	15	13.2
Guy's and St Thomas' NHS Foundation Trust	172	11	6.7
Hull University Teaching Hospitals NHS Trust	122	14	10.9
Imperial College Healthcare NHS Trust	106	7	6.7
Lancashire Teaching Hospitals NHS Foundation Trust	91	16	16.9
Leeds Teaching Hospitals NHS Trust	46	5	11.6
Liverpool University Hospitals NHS Foundation Trust	88	9	9.9
Medway NHS Foundation Trust	88	17	19.4
Mid and South Essex NHS Foundation Trust	91	7	7.8
Mid Yorkshire Hospitals NHS Trust	114	28	23.0
Norfolk and Norwich University Hospitals NHS Foundation Trust	109	15	13.1
North Bristol NHS Trust	246	28	12.5
Nottingham University Hospitals NHS Trust	46	7	15.5
Oxford University Hospitals NHS Foundation Trust	121	22	19.6
Plymouth Hospitals NHS Trust	75	11	14.0
Portsmouth Hospitals NHS Trust	76	10	13.4
Royal Berkshire NHS Foundation Trust	104	12	11.5
Royal Devon and Exeter NHS Foundation Trust	128	18	14.1
Royal Surrey County Hospital NHS Foundation Trust	237	16	6.8
Royal United Hospital Bath NHS Foundation Trust	38	6	16.1
Sheffield Teaching Hospitals NHS Foundation Trust	97	11	11.0
Shrewsbury and Telford Hospital NHS Trust	25	1	4.0
South Tees Hospitals NHS Foundation Trust	40	8	18.5
South Tyneside and Sunderland NHS Foundation Trust	94	15	14.5
St George's University Hospitals NHS Foundation Trust	110	5	4.5
Stockport NHS Foundation Trust	121	9	7.3
Swansea Bay ULHB	52	7	17.0
The Christie NHS Foundation Trust	121	13	10.8
The Newcastle upon Tyne Hospitals NHS Foundation Trust	128	16	12.3
The Royal Marsden NHS Foundation Trust	123	10	8.2
The Royal Wolverhampton NHS Trust	118	7	5.5
University College London Hospitals NHS Foundation Trust	336	27	8.1
University Hospital Southampton NHS Foundation Trust	114	11	8.7
University Hospitals Birmingham NHS Foundation Trust	76	10	13.0
University Hospitals Coventry and Warwickshire NHS Trust	148	26	17.0
University Hospitals Dorset NHS Foundation Trust	94	18	18.5
University Hospitals of Derby and Burton NHS Foundation Trust	60	10	16.3
University Hospitals of Leicester NHS Trust	91	10	11.1
University Hospitals of North Midlands NHS Trust	60	10	16.1
Wirral University Teaching Hospital NHS Foundation Trust	73	7	8.7
Worcestershire Acute Hospitals NHS Trust	36	16	40.0

Appendix 3: Provider level (surgical centre) data for the performance indicator 3

Performance indicator 3: Proportion of patients experiencing at least one genitourinary (GU) complication requiring a procedural/surgical intervention within 2 years of radical prostatectomy (presented at the level of the surgical centre).

RP Trust	No. of men who received RP	No. of men who experienced at least one GU complication	Adjusted rate (%)
Overall	6476	464	7.2
Aneurin Bevan ULHB	58	8	10.3
Betsi Cadwaladr ULHB	46	2	3.4
Bradford Teaching Hospitals NHS Foundation Trust	146	20	14.0
Buckinghamshire Healthcare NHS Trust	54	4	6.7
Cambridge University Hospitals NHS Foundation Trust	158	12	8.4
Cardiff and Vale ULHB	146	11	5.6
East and North Hertfordshire NHS Trust	147	24	15.0
East Kent Hospitals University NHS Foundation Trust	141	22	15.4
East Lancashire Hospitals NHS Trust	91	17	19.0
East Sussex Healthcare NHS Trust	78	5	6.9
Gloucestershire Hospitals NHS Foundation Trust	162	23	13.4
Guy's and St Thomas' NHS Foundation Trust	221	7	3.3
Hull University Teaching Hospitals NHS Trust	189	7	4.0
Imperial College Healthcare NHS Trust	97	9	10.7
Lancashire Teaching Hospitals NHS Foundation Trust	92	7	7.8
Leeds Teaching Hospitals NHS Trust	119	5	4.4
Liverpool University Hospitals NHS Foundation Trust	123	2	1.8
Medway NHS Foundation Trust	130	25	18.2
Mid and South Essex NHS Foundation Trust	88	3	3.1
Mid Yorkshire Hospitals NHS Trust	76	3	4.2
Norfolk and Norwich University Hospitals NHS Foundation Trust	146	10	7.1
North Bristol NHS Trust	244	25	10.4
Nottingham University Hospitals NHS Trust	95	0	0.0
Oxford University Hospitals NHS Foundation Trust	142	15	8.5
Plymouth Hospitals NHS Trust	86	5	6.8
Portsmouth Hospitals NHS Trust	87	6	7.3
Royal Berkshire NHS Foundation Trust	121	11	9.4
Royal Devon and Exeter NHS Foundation Trust	157	7	5.1
Royal Surrey County Hospital NHS Foundation Trust	231	9	3.7
Royal United Hospital Bath NHS Foundation Trust	42	2	4.9
Sheffield Teaching Hospitals NHS Foundation Trust	235	9	3.9
Shrewsbury and Telford Hospital NHS Trust	53	4	7.7
South Tees Hospitals NHS Foundation Trust	82	5	5.3
South Tyneside and Sunderland NHS Foundation Trust	100	5	4.7
St George's University Hospitals NHS Foundation Trust	127	2	1.8
Stockport NHS Foundation Trust	120	4	3.7
Swansea Bay ULHB	19	10	36.0
The Christie NHS Foundation Trust	133	14	11.8
The Newcastle upon Tyne Hospitals NHS Foundation Trust	160	8	5.3
The Royal Marsden NHS Foundation Trust	121	13	10.4
The Royal Wolverhampton NHS Trust	149	3	2.2
University College London Hospitals NHS Foundation Trust	450	12	2.7
University Hospital Southampton NHS Foundation Trust	187	7	3.8
University Hospitals Birmingham NHS Foundation Trust	145	7	4.2
University Hospitals Coventry and Warwickshire NHS Trust	145	14	10.1
University Hospitals Dorset NHS Foundation Trust	98	7	7.9
University Hospitals of Derby and Burton NHS Foundation Trust	55	5	9.1
University Hospitals of Leicester NHS Trust	144	7	5.3
University Hospitals of North Midlands NHS Trust	62	5	7.3
Wirral University Teaching Hospital NHS Foundation Trust	85	8	9.6
Worcestershire Acute Hospitals NHS Trust	93	9	9.4

Appendix 4: Provider level (radiotherapy centre) data for the performance indicator 4

Performance indicator 4: Proportion of patients receiving a procedure of the large bowel and a diagnosis indicating radiation toxicity (gastrointestinal (GI) complication) up to 2 years following radical prostate radiotherapy (presented at the level of the radiotherapy centre).

RT Trust	No. of men who received RT	No. of men who experienced at least one GI complication	Adjusted rate (%)
Overall	13497	1375	10.2
Barking, Havering and Redbridge University Hospitals NHS Trust	164	38	22.5
Barts Health NHS Trust	109	11	10.0
Betsi Cadwaladr ULHB	200	16	8.0
Brighton and Sussex University Hospitals NHS Trust	352	32	9.1
Cambridge University Hospitals NHS Foundation Trust	329	42	12.5
East and North Hertfordshire NHS Trust	456	66	14.1
East Suffolk and North Essex NHS Foundation Trust	404	43	10.2
Gloucestershire Hospitals NHS Foundation Trust	248	35	14.2
Guy's and St Thomas' NHS Foundation Trust	266	44	16.2
Hampshire Hospitals NHS Foundation Trust	93	12	12.8
Hull University Teaching Hospitals NHS Trust	279	19	6.8
Imperial College Healthcare NHS Trust	202	10	4.9
Lancashire Teaching Hospitals NHS Foundation Trust	442	38	8.3
Leeds Teaching Hospitals NHS Trust	576	43	7.9
Maidstone and Tunbridge Wells NHS Trust	450	58	12.7
Mid and South Essex NHS Foundation Trust	164	9	5.4
Norfolk and Norwich University Hospitals NHS Foundation Trust	266	46	17.2
North Cumbria Integrated Care NHS Foundation Trust	80	7	9.2
North Middlesex University Hospital NHS Trust	167	17	10.1
North West Anglia NHS Foundation Trust	210	22	10.2
Northampton General Hospital NHS Trust	167	23	14.2
Nottingham University Hospitals NHS Trust	284	37	13.0
Oxford University Hospitals NHS Foundation Trust	280	12	4.6
Plymouth Hospitals NHS Trust	87	4	4.4
Portsmouth Hospitals NHS Trust	322	53	16.9
Royal Berkshire NHS Foundation Trust	212	12	5.4
Royal Cornwall Hospitals NHS Trust	93	10	10.0
Royal Devon and Exeter NHS Foundation Trust	215	16	7.1
Royal Free London NHS Foundation Trust	78	12	16.1
Royal Surrey County Hospital NHS Foundation Trust	377	43	11.2
Royal United Hospital Bath NHS Foundation Trust	119	13	11.1
Sheffield Teaching Hospitals NHS Foundation Trust	486	84	17.6
Shrewsbury and Telford Hospital NHS Trust	176	24	12.9
Somerset NHS Foundation Trust	135	4	2.9
South Tees Hospitals NHS Foundation Trust	265	16	6.4
Swansea Bay ULHB	112	14	12.2
The Christie NHS Foundation Trust	546	71	12.9
The Clatterbridge Cancer Centre NHS Foundation Trust	477	24	5.0
The Newcastle upon Tyne Hospitals NHS Foundation Trust	412	21	5.3
The Royal Marsden NHS Foundation Trust	329	19	5.5
The Royal Wolverhampton NHS Trust	281	39	14.8
Torbay and South Devon NHS Foundation Trust	100	6	5.8
United Lincolnshire Hospitals NHS Trust	177	16	8.6
University College London Hospitals NHS Foundation Trust	33	3	9.2
University Hospital Southampton NHS Foundation Trust	141	16	11.3
University Hospitals Birmingham NHS Foundation Trust	409	35	8.8
University Hospitals Bristol and Weston NHS Foundation Trust	202	5	2.4
University Hospitals Coventry and Warwickshire NHS Trust	116	13	11.4
University Hospitals Dorset NHS Foundation Trust	227	15	7.1
University Hospitals of Derby and Burton NHS Foundation Trust	266	30	11.6
University Hospitals of Leicester NHS Trust	172	13	8.3
University Hospitals of North Midlands NHS Trust	198	25	13.7
Velindre NHS Trust	412	32	7.7
Worcestershire Acute Hospitals NHS Trust	134	7	5.1

Appendix 5: Provider level (specialist MDT) data for the performance indicators 5 and 6 (Wales only)

Performance indicator 5: Proportion of men with low-risk localised prostate cancer undergoing radical prostate cancer therapy.

Performance indicator 6: Proportion of men with locally advanced disease receiving radical prostate cancer therapy.

Specialist MDT	Performance indicator 5			Performance indicator 6		
	No. of men diagnosed with low-risk localised disease	No. of men with low-risk localised disease receiving radical treatment		No. of men diagnosed with locally advanced disease	No. of men with locally advanced disease receiving radical treatment	
		N	%		N	%
Overall	92	8	8.7	487	352	72.3
Aneurin Bevan University Health Board	24	1	4.2	48	37	75.1
Betsi Cadwaladr University Health Board	5	0	0.0	161	119	73.3
Cardiff and Vale University Health Board	40	4	10.0	94	80	81.7
Swansea Bay University Health Board	23	3	12.0	184	116	65.3