

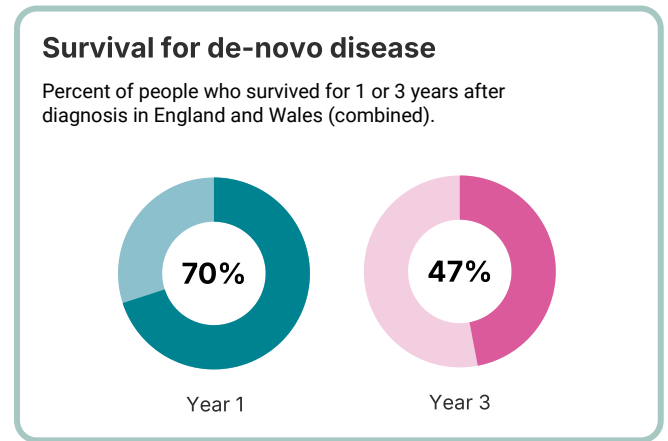
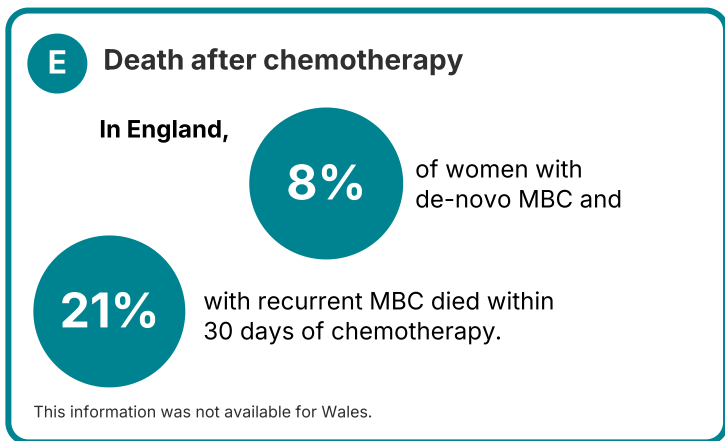
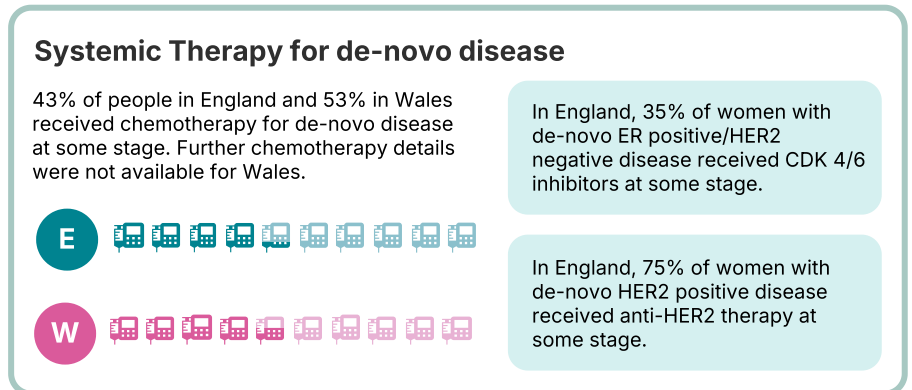
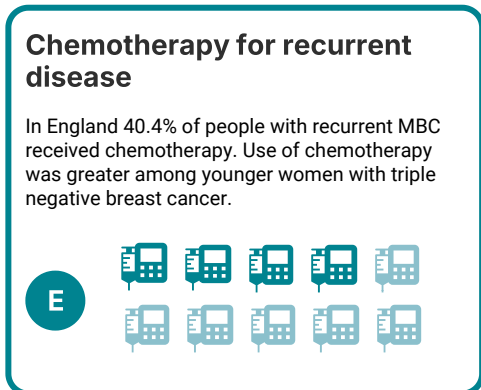
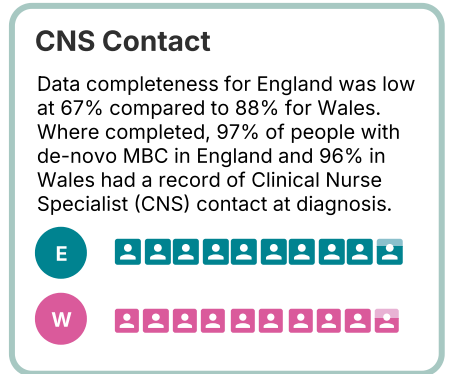
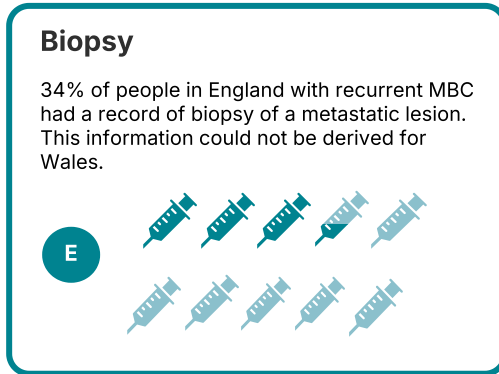
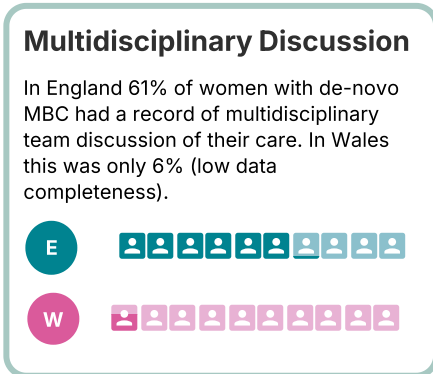
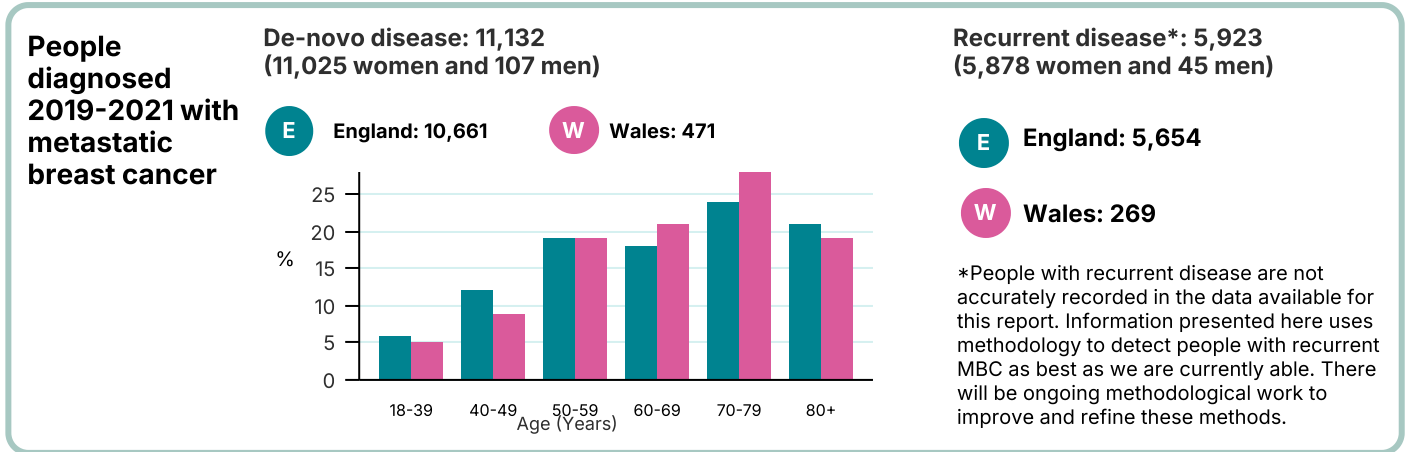
2. Infographic



NAoMe

National Audit of Metastatic Breast Cancer

The NAoMe reports on all people (women and men) diagnosed with metastatic breast cancer (MBC) in NHS hospitals in England and Wales (also known as secondary, advanced, or stage 4 breast cancer). It includes those with MBC diagnosed at presentation (de-novo disease), as well as those with recurrent metastatic disease.



Note 1: Where we limited this information to women, this is because the number of men were too small to produce reliable statistics.