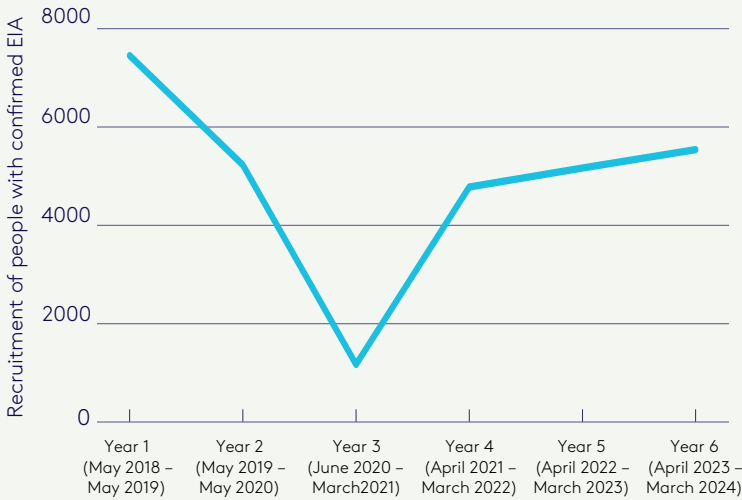


State of the Nation Summary Report 2024 Infographic

Recruitment rates continue to improve post-pandemic

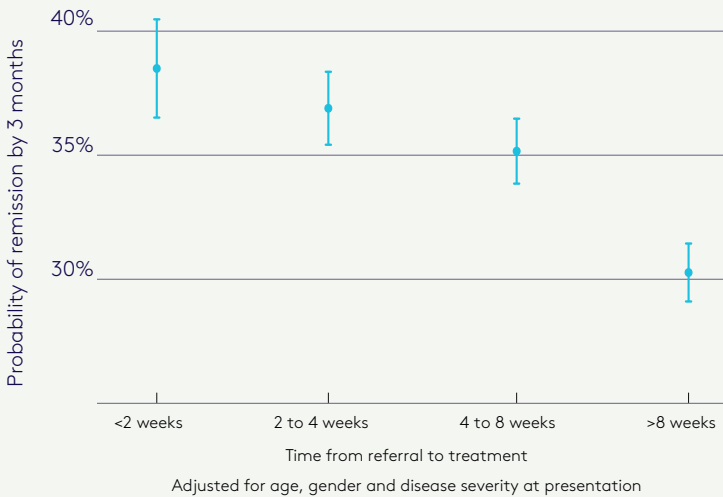
All eligible units entered some data in year six.



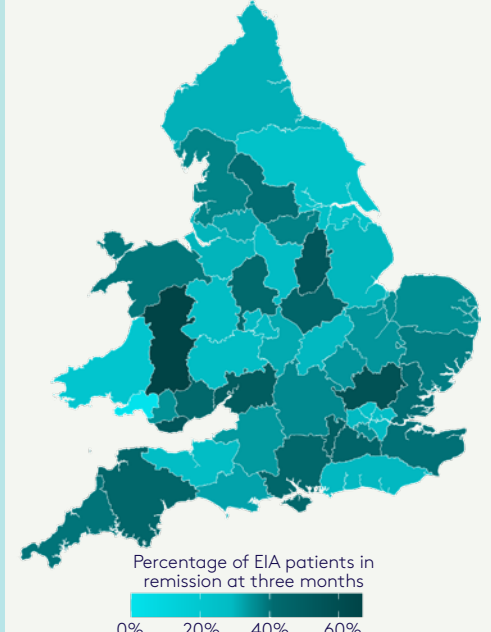
Treatment timeliness for early inflammatory arthritis has improved



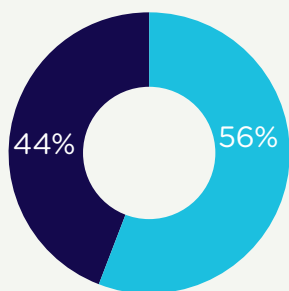
Relationship between remission rates and treatment timeliness



Remission rates remain stable at 35% but geographic variation persists



Most early inflammatory arthritis patients report that their symptoms significantly impact their employment



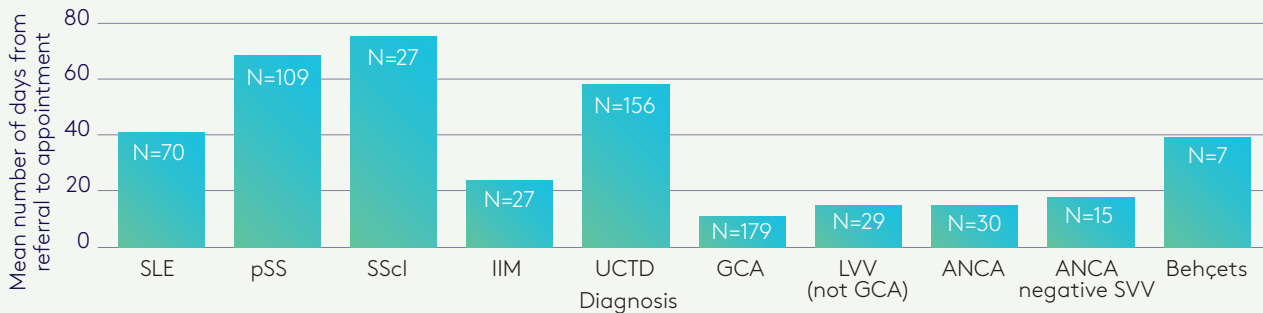
■ Employed at diagnosis
■ Unemployed at diagnosis

75%
of those who were unemployed at diagnosis said this was due to their arthritis

20%
of those who were employed at diagnosis said they had to change their work after diagnosis

State of the Nation Summary Report 2024 Infographic

Waiting times for Rare Autoimmune Rheumatic Diseases are highly variable (see list of diagnoses)



Diagnosis	
SLE	Systemic lupus erythematosus
pSS	Primary Sjögren's syndrome
SScl	Systemic sclerosis
IIM	Idiopathic inflammatory myopathies
UCTD	Undifferentiated/other connective tissue disease or overlap syndrome
GCA	Giant cell arteritis
LVV (not GCA)	Large vessel vasculitides (not giant cell arteritis)
ANCA	ANCA-associated vasculitis
ANCA negative SVV	Other small/medium vessel vasculitides (ANCA-negative)
Behçets	Behçet's syndrome

Recommendations

- Royal College of Physicians:
Ensure consultant job plan guidance includes allocated time for triage and pre-referral specialist advice.
- Integrated Care Boards and Welsh Health Boards:
Ensure commissioned rheumatology services include protected EIA clinics.
- British Society for Rheumatology:
Produce a national guideline recommending that people living with EIA are offered a DMARD on the day of their diagnosis.
- Care Quality Commission and Health Inspectorate Wales:
Improve regulatory oversight of individual healthcare providers by utilising routine NEIAA data to assess standards of care and ensure compliance with quality standards.
- Department for Works and Pensions, Department of Health and Social Care, NHS England and Welsh Health Boards:
Improve timely access to employment and mental health support programmes for people living with EIA.