

1,722

suicides by people under recent (within 12 months)  
mental health care in 2022

26%

of all people who died by suicide in 2012-2022 had  
recent contact with mental health services

### Acute mental health care settings



47%  
lived alone



17%  
had serious  
financial problems



31%  
had recent  
self-harm



Deaths **on the  
ward** have recently  
**increased**



Deaths **after discharge**  
from the ward have **risen**  
since 2017

Prevention should focus on ward safety, support after  
discharge, and recognition of risk following self-harm

### Real-Time Surveillance of suspected suicides

67

in-patient and  
post discharge  
deaths  
reported



67% were **in-  
patients; over  
half** had been  
**detained**



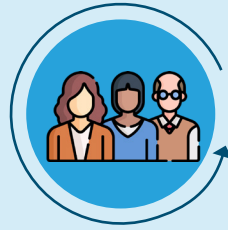
Evidence of  
**suicide-related  
internet use**

All trusts contributing to real-time surveillance will  
provide early warning of safety concerns

### Suicide in mental health patients with bipolar disorder

136

deaths per  
year



Mostly **female**,  
**middle-aged**, and  
**living alone**



**39%** were  
prescribed **lithium**;  
**12%** received  
**psychological**  
therapy

Lithium treatment and psychological interventions  
should be provided in line with NICE guidelines

### Suicide after missed contact and non-adherence with medication

347

deaths per  
year following  
**missed contact**

182

deaths per year  
following **non-  
adherence** with  
medication



**Affective disorder**  
common in both  
groups



**Socioeconomic  
adversity** was  
common in those who  
missed contact



**Half** of patients who  
were non-adherent  
were **prescribed  
antipsychotics**

Greater family involvement may help engagement efforts

### Suicide and recent bereavement in mental health patients

119

deaths per  
year



More likely to be  
**female**, **older**, and  
**widowed** than  
other patients



**7%** died on or near  
the **anniversary** of  
a bereavement

Enquiring about significant dates should be a routine  
part of assessment